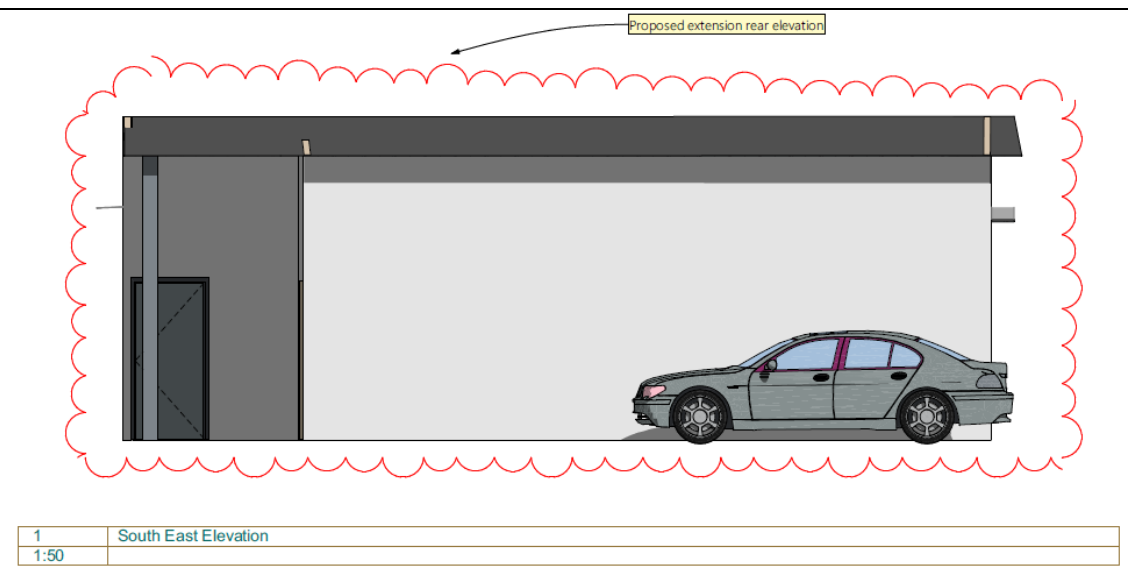
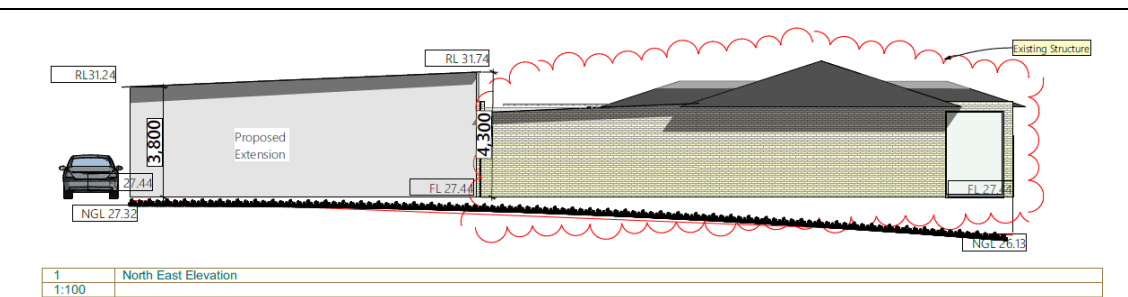
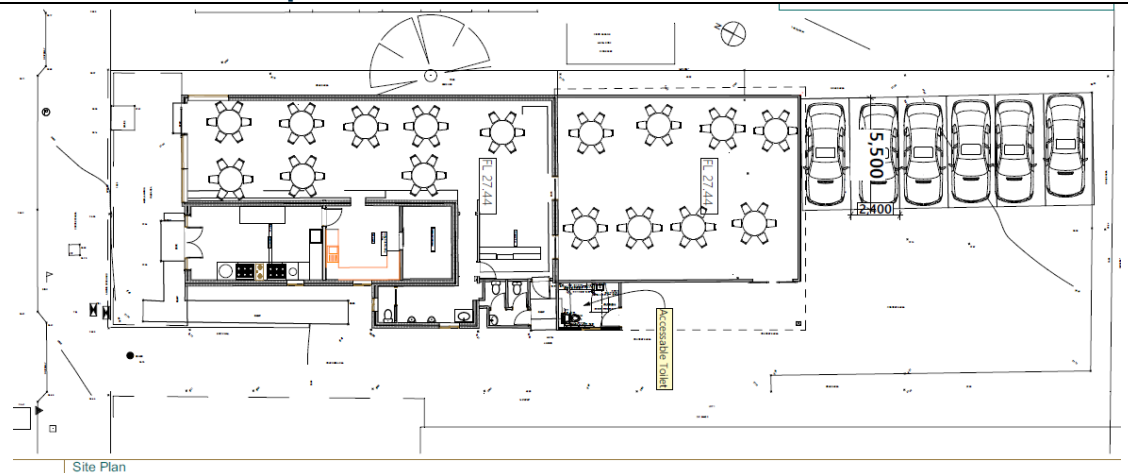


# Neighbour Notification Plan

## 66 Evaline St Campsie





**PARSHI ArchiDesign and Construction.**

Planning and Architecture Research for Sustainable Housing Integrity (PARSHI)

**Office Address**

Office 2, Level 1, 208A Beamish St, Campsie, NSW 2194

Contact: Mob: 0425834401, ph 02

80331960 [www.parshi.com.au](http://www.parshi.com.au), Email:

[Info@parshi.com.au](mailto:Info@parshi.com.au)